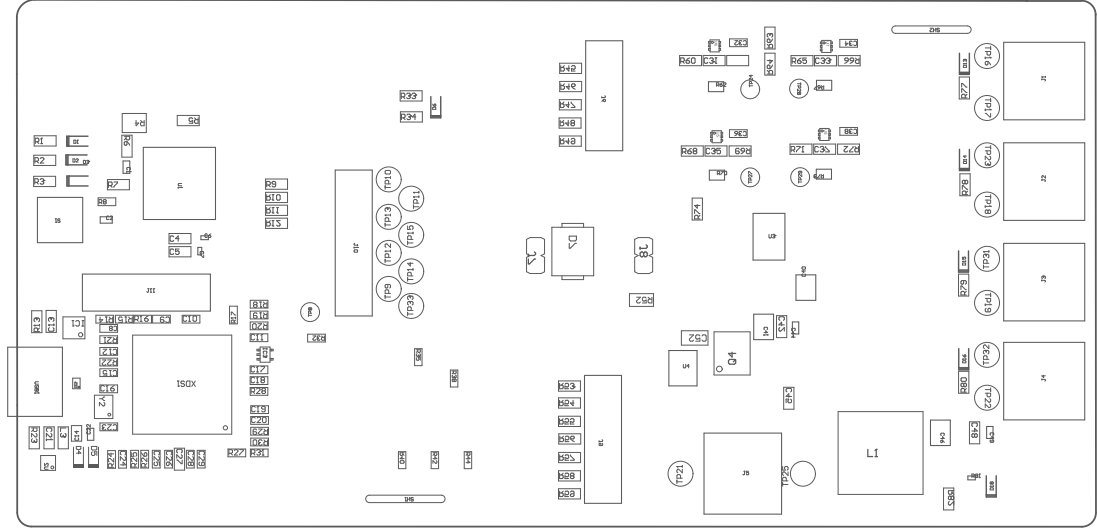


Z21 ■Install label in silkscreened box after final wash. Text shall be 8 pt font. Text shall be per the Label Table in the PDF schematic.

Z22 ■These assemblies are ESD sensitive, ESD precautions shall be observed.

Z23 ■These assemblies must be clean and free from flux and all contaminants. Use of no clean flux is not acceptable.

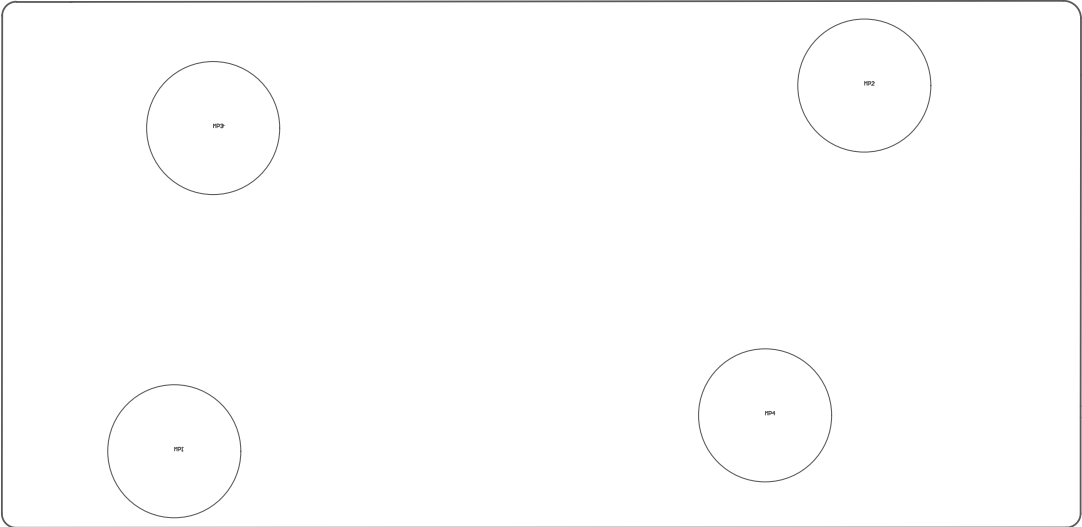
Z24 ■These assemblies must comply with workmanship standards IPC-A-610 Class 2, unless otherwise specified.



COMPONENTS MARKED 'DNP' SHOULD NOT BE POPULATED.
ASSEMBLY VARIANT: DRU81646PWP

PCB VIEWED FROM TOP SIDE	BOARD #: MD114-001	REV: A	SUN REV: Not in version control
	TID #: N/A		
PLOT NAME = Top Assembly Drawing	GENERATED : 9/10/2025 4:11:13 PM	TEXAS INSTRUMENTS	

Not in version control



COMPONENTS MARKED 'DNP' SHOULD NOT BE POPULATED.
ASSEMBLY VARIANT: DRV81646PWP

PCB VIEWED FROM BOTTOM SIDE	BOARD #: MD114-001	REV: A	SUN REV:
	TID #: N/A		
PLOT NAME = Bottom Assembly Drawing	GENERATED : 9/10/2025 4:11:13 PM		TEXAS INSTRUMENTS